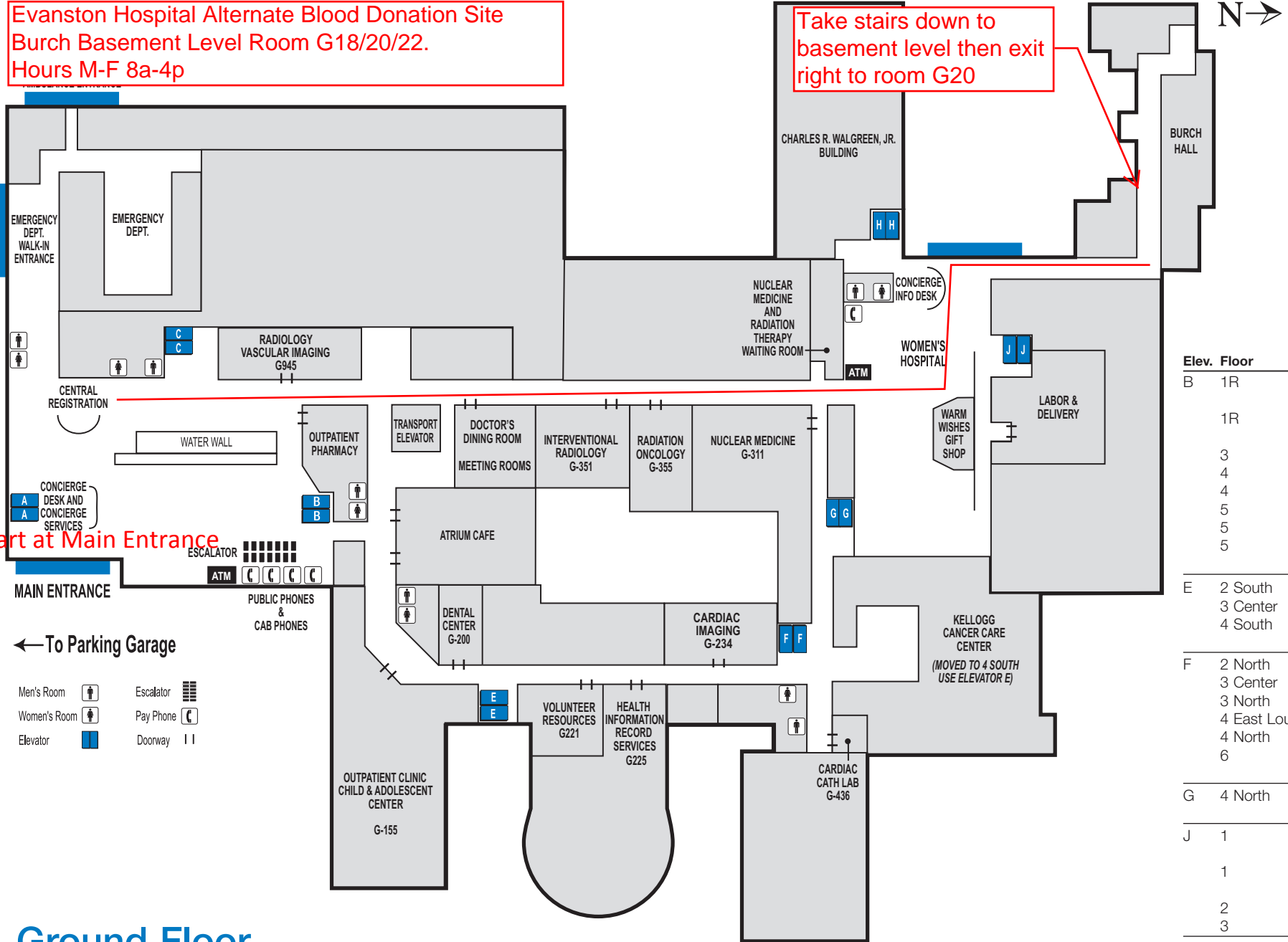




**Evanston Hospital Alternate Blood Donation Site**  
**Burch Basement Level Room G18/20/22.**  
**Hours M-F 8a-4p**

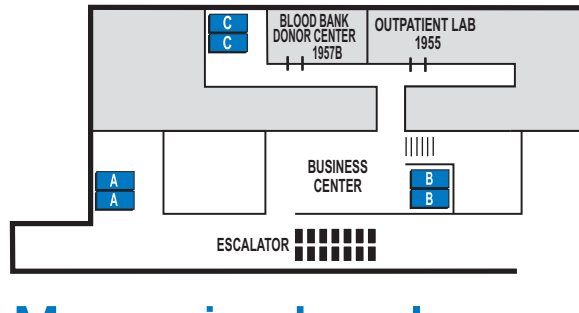
**Take stairs down to basement level then exit right to room G20**



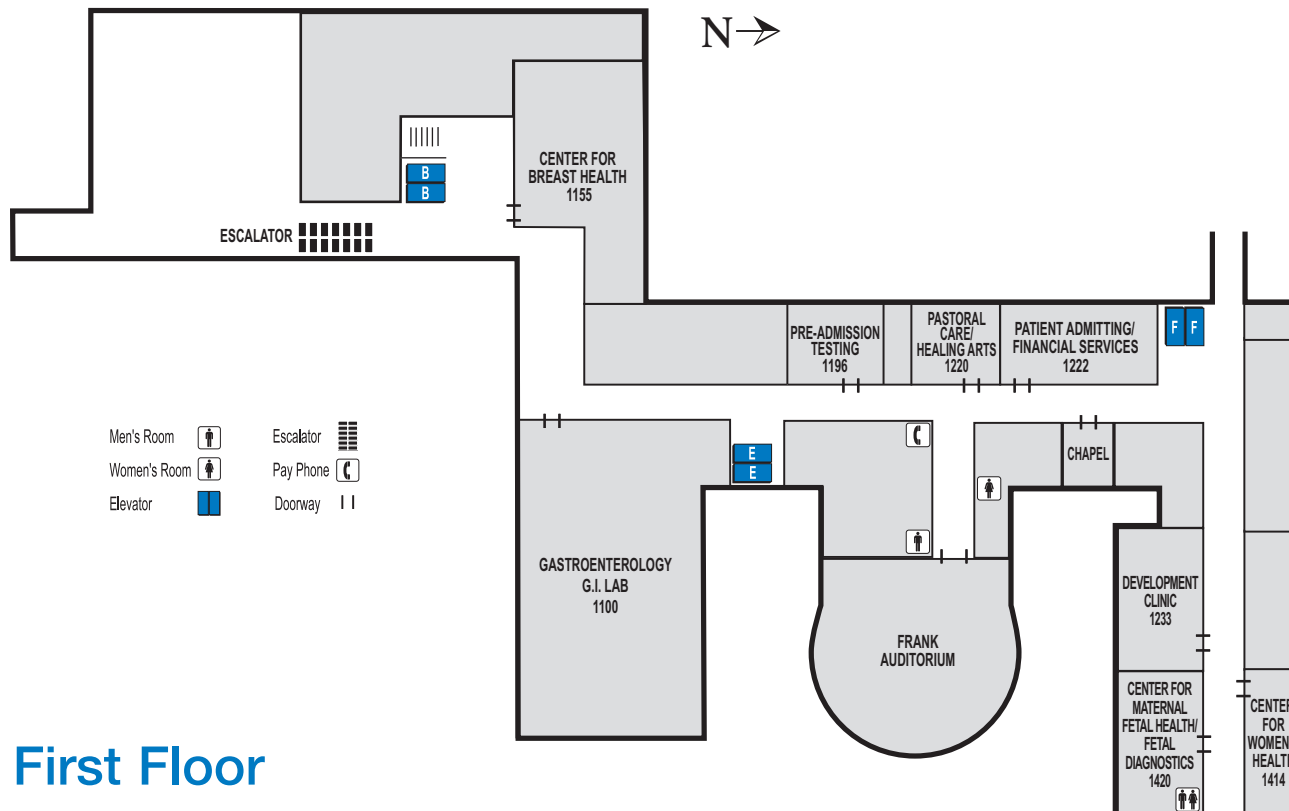
Elev.	Floor	Patient Care Units
B	1R	Fetal Diagnostics/ Colposcopy
	1R	Gastroenterology/ GI Lab
	3	Ambulatory Surgery
	4	ICU
	4	4 South Searle
	5	5 North Searle
	5	5 South Searle
	5	Infusion Center
	5	Observation Unit
E	2 South	Rehabilitation
	3 Center	Hemodialysis
	4 South	Kellogg Cancer Care Center
F	2 North	CCU
	3 Center	Hemodialysis
	3 North	Pediatrics
	4 East Louis	Med/Surg Unit
	4 North	IV Therapy
	6	Cardiopulmonary Rehabilitation
G	4 North	Neurophysiology (EEG Lab)
J	1	Breastfeeding Resource Center
	1	Infant Special Care Unit
	2	Women's Hospital
	3	Women's Hospital



We are committed to providing a healthy environment. All NorthShore University HealthSystem properties are smoke-free.



## Mezzanine Level



- Men's Room
- Women's Room
- Elevator
- Escalator
- Pay Phone
- Doorway

## First Floor

### Phone Number Extensions

Admitting/Financial Services	2130
Cardiac Cath	2216
Cardiac Graphics	2065
Center for Maternal Fetal Health/Fetal Diagnostics	2860
Concierge Services	
Internal: Dial	4-YOU (4968)
External: Dial	(224) 364-4-YOU or (224) 364-4968
Dental Center	2380
EEG/Sleep Center	2575
Emergency Dept.	2111
Gastroenterology/GI Lab	2236
Kellogg Cancer Care	2112
Labor & Delivery	2222
Nuclear Medicine	2591
Observation Unit	2844
Outpatient Pharmacy	2210
Outpatient Clinic/CAC	2700
Outpatient Lab	3903
Pastoral Care/Healing Arts	2330
Pre-Admission Testing Service	4710
Radiology	2528
Well Wishes Gift Shop	2717

**When dialing from the outside, add prefix 1-847-570 plus the extension.**